

Mounting supplies

- A** A drill adaptor(s)
- B** A tube copper grease
- C** A white pencil
- D** A special drill can
- E** EPDM glue
- F** EPDM sealing strip
- G** Fix accessories*



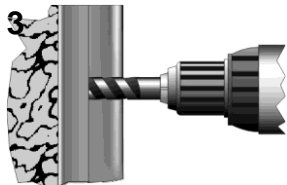
Chemical anchor capsules and turn moments

| Type | Bore hole Ø mm | Deep mm | max. Nm |
|------|----------------|---------|---------|
| M 10 | 12 | 90 | 20 |
| M 12 | 14 | 110 | 40 |

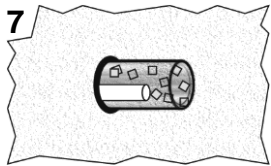
For installation of the chemical anchors follow the guide provided with the product separately!

Specified cure end temperature time in the bore hole

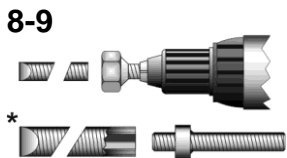
| Temp. °C | Mines | Hours |
|-----------|-------|-------|
| 20 tot > | 10 | |
| 10 tot 20 | 20 | |
| 0 tot 10 | | 1 |
| - 5 tot 0 | | 5 |



- Fix : *1 - Concrete with chemical anchors. Description below.
*2 - Wood with through hole studs. Holes 2 mm larger than stud diameter.
*3 - Wood with coach screws.



- 1 **Check : The concrete for firmness, flatness and level. Max. tolerance 2 mm per meter.**
- 2 Install the tilting weir in front of the hole and check on weir plate horizontal for the water level.
- 3 Pilot drill the mounting holes at either side of the top face.



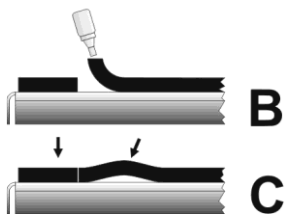
- 4 Remove the tilting weir
- 5 Drill the mounting holes to the recommended depth.
- 6 Clean the fixing holes.
- 7 Fit the chemical anchor capsules.
- 8 Apply copper grease to **the nut side** of the studs.
- 9 Insert the studs using a hammer drill with attachment fitted.
- 10 **Remove !** any excessive chemical mixture around the studs.
- 11 Allow the chemical anchors to cure for the specified time.



- 12 Install the fitting.
- 13 Fasten the nuts by hand.
- 14 Pilot drill all other mounting holes.
- 15 **See more at points 4 up to and including 11.**
- 16 Make sure the fixing surfaces are clean and dry.
- 17 Mark the centre lines of the mounting holes on the flange using a white pencil.
- 18 Apply sealing strip to the frame flange , first at the bottom across the full width, then with over-lengths (A) on the left and right hand sides.
- 19 Apply a generous amount of adhesive to the mating faces (B) of the sealing strip. Press them firmly against the strip. (C)



- 20 Using the drill bush supplied, drill attachment holes in sealing strip.
- 21 Install the tilting weir and check on weir plate at 90 / 45 / 0 degree horizontal angle for the water level.
- 22 Locate the washers and the spring washers over the studs.
- 23 Tighten the nuts to the correct loading.
- 24 **Verify that the product is functioning correctly.**



- | | | |
|----|-----------------|---|
| 40 | Fit to wood *2: | Install the tilting weir and check on weir plate at 90 / 45 / 0 degree angle for the water level. Pilot drill the mounting holes. Remove the fitting. Drill the Ø 12 mm mounting through holes. See more at points 16 up to and including 24. |
|----|-----------------|---|



- | | | |
|----|-----------------|--|
| 60 | Fit to wood *3: | Install the tilting weir and check on weir plate at 90 / 45 / 0 degree angle for the water level. Pilot drill the mounting holes. Remove the fitting. Pre-drill the Ø 7 mm mounting holes. See more at points 16 up to and including 24. Screw the M10 coach screws in. |
|----|-----------------|--|